

multicare

Helping you deliver better healthcare



TAKING ACTION TODAY

Your Changing Places Action Handbook





TAKING ACTION TODAY

Your Changing Places Action Handbook

CONTENTS

Introduction

Planning your Changing Places toilet facility

Key Changing Places equipment

The cost of installing a Changing Places toilet

Example Changing Places room layouts

Step-by-step guide to installing your new facility

Other considerations

Working with Multicare

Changing Places case study

What next?

Notes

Useful links & resources

INTRODUCTION

The time to take action and start planning your accessible Changing Places toilet facility is **TODAY!**

This guide by **Multicare Medical** will give you everything you need to plan your Changing Places toilet and confidently comply with the regulations.

This will include the planning advice, key equipment requirements, example room layouts, cost implications and more.

We're also going to cover additional important considerations such as how to register your completed **Changing Places facility** and what happens after installation.

At the end of this comprehensive guide you'll find a step-by-step plan and a check list so you can be sure nothing is missed, and you have all the information you need so you can start **taking action today!**

Changing Places at Birmingham City University



WHAT Are Changing Places Toilets?

A Changing Places toilet facility has a range of specialist equipment and space for disabled users to meet their individual personal care needs.

Measuring 4 x 3 metres (approximately 13' x 10') they are larger than a standard accessible or disabled toilet and contain the following items,

A ceiling hoist

An adjustable height changing bench

A basin – preferably height adjustable

A peninsular toilet

Additional ancillary equipment



Changing Places at Gloucester University

WHO Are Changing Places For?

Over ¼ million people in the UK with a disability need extra equipment and space to allow them to use the toilets safely, comfortably and with dignity.

These needs are only met through using Changing Places toilets with the specialist equipment to enable disabled persons to be changed in safety and dignity.



250,000

Disabled people
in the UK need
Changing Places
Toilets when
away from home

WHY Are Changing Places Needed?

A standard accessible or 'disabled' toilet only contains a toilet and washbasin, and very occasionally a shower. Measuring only 2.2 x 1.5 metres, they don't provide enough space for a wheelchair and carer.

Disabled users with complex needs often need to have continence pads changed, be hoisted from a wheelchair and may not be able to access a standard height basin. These needs cannot be met through a standard accessible toilet.

Many users have had experiences of attending to personal care needs on the unhygienic floors of public toilets with a loss of personal dignity. A Changing Places facility gives them a safe, warm and hygienic space where they can attend to all their personal needs in dignity and safety.

Without Changing Places, disabled people and their families have limited alternative options.

ALTERNATIVE OPTIONS

Changing a loved one on a dirty toilet floor
Limiting fluid intake to avoid needing the toilet when out
Sitting in soiled clothing or dirty nappies
Manually lifting someone out of their wheelchair
Reducing time out of the house

ASSOCIATED RISKS

Undignified and unhygienic
Risks dehydration and urinary tract infections
Leading to health implications
Risking the safety of both the carer and disabled person
Restricting social lives and interaction

Changing Places at Coventry Train Station



WHERE Can Changing Places Be Found?

Ideally Changing Places toilets should be installed in the same places as standard toilets. However, user feedback and research has identified three key areas where they are required.

TRANSPORT LOCATIONS



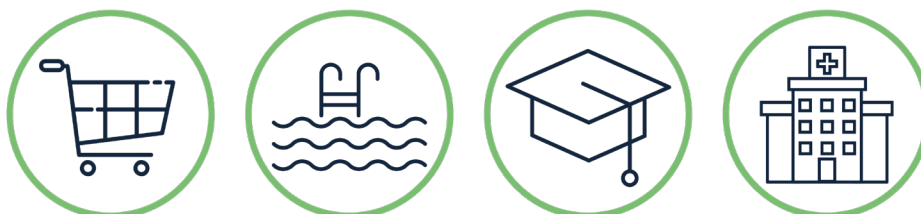
This includes airports, bus stations, train stations and service stations. These locations are extremely important as they allow people to plan their journeys and travel freely.

DESTINATION LOCATIONS



These are venues and attractions where people may spend the day or a prolonged period. This includes theme parks, zoos, museums, art centres, cinemas, and stadia.

EVERYDAY LOCATIONS



Shopping centres, leisure centres, supermarkets, libraries, colleges, universities, places of worship, hospitals, and health centres are facilities that people use on an everyday basis in their local area and are used on a regular basis without having prior planning or worry about whether suitable facilities are available.

PLANNING YOUR CHANGING PLACES FACILITY

LEGALITIES & Compliance

BUILDING REGULATIONS

In January 2021 a major change to Building Regulations was enforced stipulating it a **legal requirement** for any place of assembly recreation or entertainment with a capacity of 350+ people to install a Changing Places facility if they are newly built or are undergoing major refurbishment.

This includes art galleries, cinemas, concert halls, conference centres, further education colleges, universities, hotels that include leisure facilities, libraries, motorway services, museums, places of worship, and theatres.

The new regulations also state that the following are required to install Changing Places,

- Shopping centres or retail parks with the gross floor area of 30,000m²
- Retail premises of 2,500m²
- Sport or leisure buildings with 5,000m²
- Stadia, theme parks, zoos or exhibition centres with the capacity 2,000 people or more



Changing Places at Royal Festival Hall

THE BRITISH STANDARD: BS8300-2:2018

All Changing Places facilities **must comply** to the **British Standard BS8300-2:2018** titled 'Design of an accessible and inclusive built environment – Buildings'.

This provides guidance on good practice for the design of outdoor and indoor environments within new buildings and their approaches to meet the needs of disabled people.

It carries a specific requirement for Changing Places to be included in larger buildings and complexes as mentioned above, with the addition of health facilities.

PLANNING Your Facility

PLANNING

Careful consideration is required when planning your Changing Places facility and you must ensure that your facility adheres to the British Standard BS8300-2:2018 and meets the criteria set out by the Changing Places Consortium.

Once the facility is installed and approved, it can be registered and included on the official Changing Places toilet map. This is where users go to plan their journeys and day trips, so inclusion on this map will help to attract families from the disabled community.

It's important to note that Changing Places facilities should be included **in addition** to standard disabled toilets and not in place of them.

SPACE

To comply with the official Changing Places criteria, the available space must be 3m x 4m (12sqm).

Extensive research has proved that this is the minimum size to accommodate all the required equipment and allow enough space for wheelchair users and up to two care givers. If retro fitting a Changing Places facility into an existing room, listed building, or limited space, it's extremely important that careful consideration is given to the design to ensure the facility can still be registered.

Additional requirements within the space are as follows,

- Step-free access to the room
- 950mm wide doorway
- Good lighting
- Ceiling height of 2.4m
- Heating
- Toilet and basin both a minimum of 1m from the corner of the room
- Basin
- Room security
- Located in the centre of the venue or with quick and easy access

MODULAR CHANGING PLACES

Some buildings don't have internal space or structural integrity to accommodate a Changing Places toilet facility. Listed buildings, zoos and large country parks are examples of where this may be the case. This is where an external modular Changing Places can be a great alternative solution.

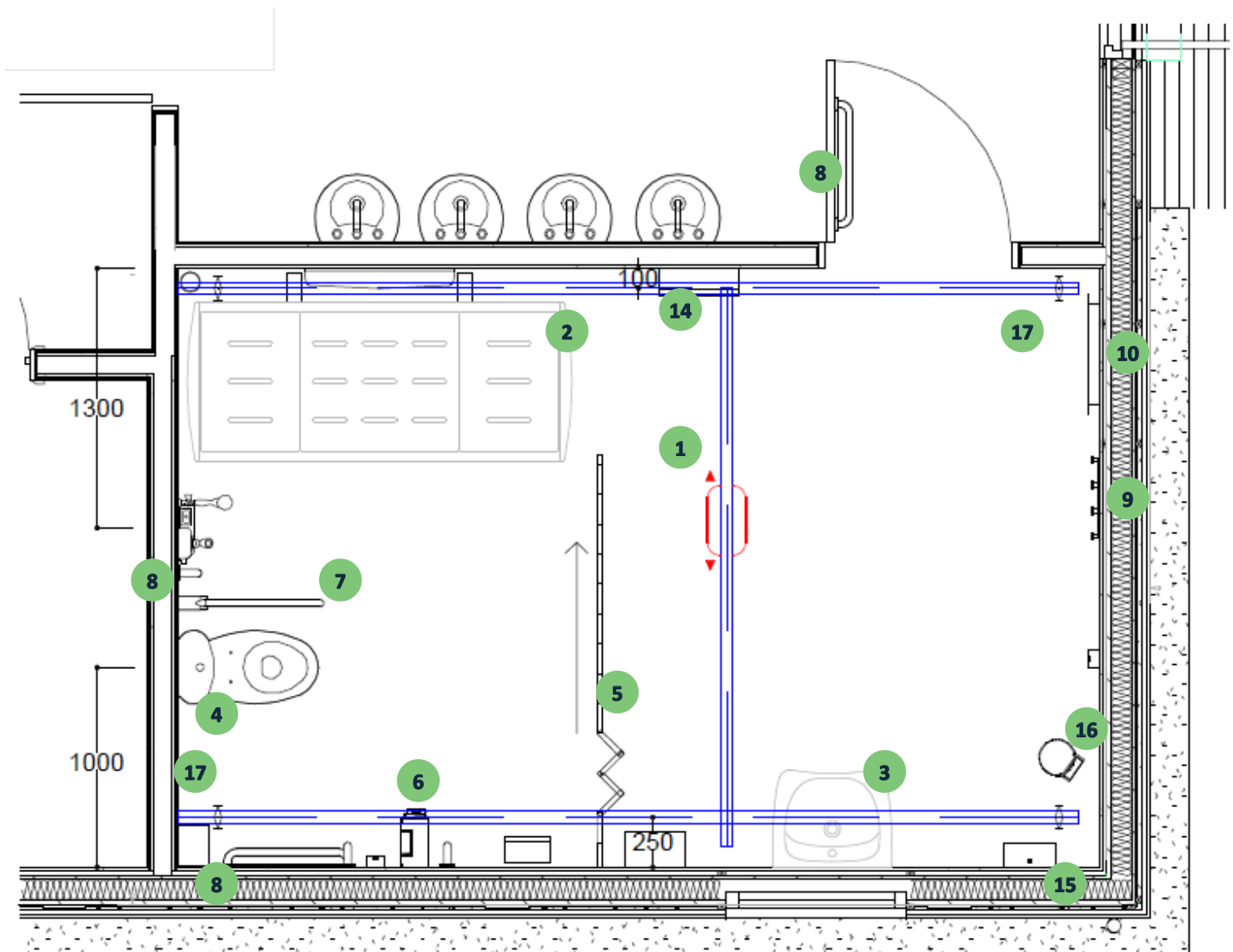
Modular Changing Places contain all the required equipment and can be assembled off-site and craned into position. This greatly reduces disruption and build-time on site. They can also be modified to meet your specific requirements and made from brick or timber to meet planning requirements.

KEY CHANGING PLACES EQUIPMENT

The required equipment for a Changing Places facility is as follows,

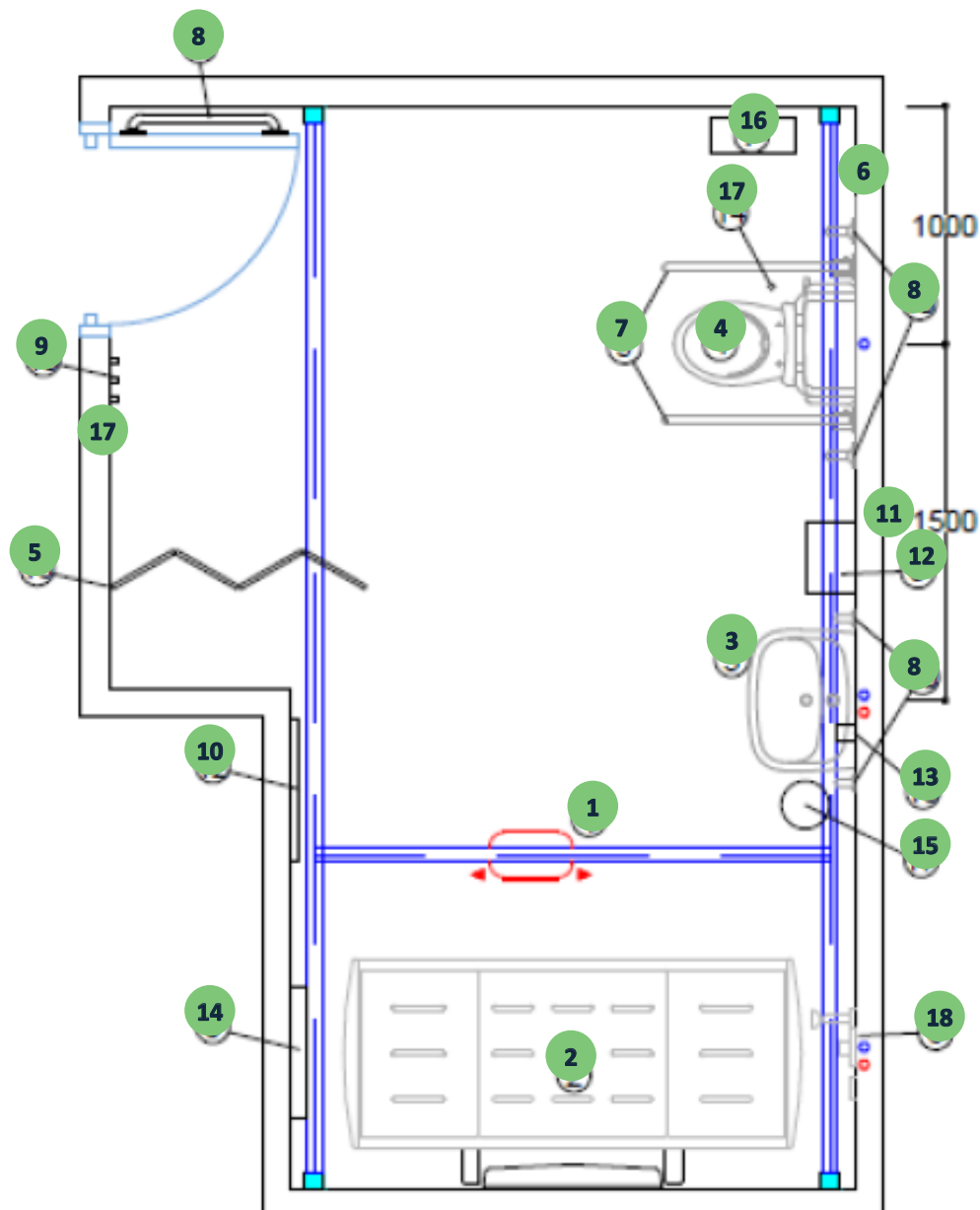
- | | | |
|-----------------------------|-------------------------------|----------------------|
| 1 Ceiling Track Hoist | 2 Changing Table | 3 Basin |
| 7 Drop Down Grab Rails | 8 Wall-Mounted Grab Rails | 9 Coat Hooks |
| 13 Soap Dispenser | 14 Wide Paper Towel Dispenser | 15 General Waste Bin |
| 19 Wall-Mounted Shower Seat | | |

EXAMPLE ROOM LAYOUT 1



- | | | |
|--|----------------------------------|--------------------------------|
| 4 Toilet | 5 Privacy Screen | 6 Colostomy Bag Shelf |
| 10 Full-Length Mirror | 11 Automatic Hand Dryer | 12 Hand Towel Dispenser |
| 16 Large Sanitary Disposal Unit | 17 Emergency Alarm System | 18 Wall-Mounted Shower |

EXAMPLE ROOM LAYOUT 2



1 CEILING TRACK HOIST

For full room coverage and access to every piece of equipment in the Changing Places toilet, an XY Ceiling Track Hoist is recommended. This consists of a moveable track which allows the care giver to safely transfer the user from wheelchair to toilet, changing bench and anywhere else in the room easily and with dignity.

Where it's not possible to install a ceiling track hoist, wall posts can be incorporated into the design to achieve the same result.

Ceiling hoists should have a safe working load of 200kg (31 ½st)

Multicare Recommends: [GH3 Ceiling Hoist](#)



2 ADULT HEIGHT ADJUSTABLE CHANGING TABLE

Changing tables provide a comfortable, hygienic, and safe place for many disabled users to be changed and cared for, as well as stretch their bodies after being in a wheelchair for a long period of time. The height adjustable feature means that the equipment can be raised and lowered to prevent injury or strain for the care giver.

Changing tables can either be wall mounted, or mobile, depending on the space within the room, and should be waterproof if being installed along with a shower.

The changing table should be a minimum of 1800mm long and have a safe working load of 200kg (31 ½st). It should be adjustable in height from approximately 300-1,000mm from the ground.

Multicare Recommends: [300 Series Changing Couch](#)



3 WASH BASIN

A wash basin with wheelchair access is required and this should preferably be electrically height adjustable so the user can use independently where possible.

The height adjustment should be in the range of 580-1,030mm from the floor and have a minimum of 700mm access underneath for a wheelchair.

A standard wash basin may be fitted at a height of 720-740mm from the floor.

Multicare Recommends: [Matrix Curve Adjustable Basin](#)



4 PENINSULAR TOILET

A standard close coupled WC is required and should be positioned 1,000mm away from the wall to allow the user to self-transfer, or for care givers to have access from either side, with the seat height at 480mm.

For full accessibility and to accommodate independent use, a wash/dry toilet is preferred, although not essential.

Multicare Recommends: [Geberit Mera Shower Wash Toilet](#)



5 PRIVACY SCREEN

A folding privacy screen or curtain should be positioned between the toilet and the rest of the room.

These give privacy to the user and also allow the care giver to use the facilities without anyone leaving the room.

Multicare Recommends: [Wall Mounted Privacy Screen](#)



6 COLOSTOMY BAG SHELF

A colostomy bag shelf of 135x595mm should be fitted to the wall within reach from the toilet at a height of 590mm from the floor.

Care must be given so it does not obstruct the handrails or any other equipment.

Multicare Recommends: [Colostomy Shelf](#)



7 DROP DOWN GRAB RAILS x2

2 drop down grab rails should be positioned at a height of 680mm from the floor and 320mm either side of the toilet from the centre position to aid and support transfer as well as give support whilst seated.

These should be in a visually contrasting colour to the rest of the room.

Multicare Recommends: [Drop Down Grab Rails](#)



8 WALL-MOUNTED GRAB RAILS x5

Five 800mm long grab rails must be fitted horizontally and vertically within the Changing Places facility. These should be fitted to the walls where extra assistance, support or transfer is needed such as near the changing table, wash basin and the inside of the door to help closure.

These should all be in a visually contrasting colour to the rest of the room.

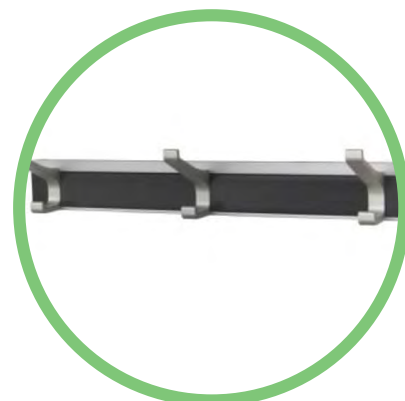
Multicare Recommends: [Wall Mounted Grab Rails](#)



9 COAT HOOKS x6

At least 6 coat hooks should be fitted to the wall and be positioned at a height of 1,050mm for the user and 1,400mm for the care giver or assistants.

Multicare Recommends: [2x Sets of Three Coat Hooks](#)



10 FULL-LENGTH MIRROR

A full-length mirror should be fitted to the wall to allow both the wheelchair user and assistant to view their whole body.

Multicare Recommends: [Full-Length Safety Mirror](#)



11 AUTOMATIC HAND DRYER

An electric hand dryer should be fitted on the door side of the wash basin with the base at a height of between 800-1,000mm from the floor.

Hand dryers requiring the user to insert their hands should not be installed, and 'ultra-rapid' dryers which are loud should also not be installed as these are not suitable for people with sensory impairments.

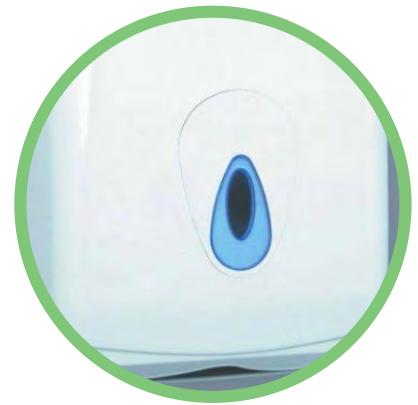
Multicare Recommends: [Automatic Hand Dryer](#)



12 HAND TOWEL DISPENSER

As an alternative to the automatic hand dryer, a paper hand towel dispenser should be provided and fitted close to the wash basin at a height of between 800-1,000mm.

Multicare Recommends: [Z Fold Hand Towel Dispenser](#)



13 SOAP DISPENSER

A wall mounted soap dispenser should be fitted beside the wash basin with the underside between 800-1,000mm above floor level for ease of use.

It should also be easy to operate using just one hand.

Multicare Recommends: [Soap Dispenser](#)



14 WIDE PAPER TOWEL DISPENSER

To ensure the changing table is always clean and hygienic, a wide paper towel dispenser should be fitted close by. This allows the care giver to cover the table with paper towels and also use them to clean the equipment after use.

This should be fitted on the wall between 800-1,000mm above floor level.

Multicare Recommends: [Wide Paper Towel Dispenser](#)



15 GENERAL WASTE BIN

A general waste bin should be provided for hand towels and other general waste.

If possible, this should be recessed, or wall mounted to maximise floor space.

Multicare Recommends: [General Waste Bin](#)



16 LARGE SANITARY DISPOSAL UNIT

In addition to a general waste bin, a large sanitary bin should be provided to accommodate adult size continence pads.

Multicare Recommends: [Sangenic Nappy Sealer](#)



17 EMERGENCY ALARM SYSTEM

An emergency alarm system should be installed with two red pull cords and a reset button. The first cord should be installed by the toilet and the second by the door. Both should fully reach the floor level and never tied up.

The reset button should also be fitted by the door with an alarm indication light above the door.

Multicare Recommends: [Emergency Alarm Cord & Reset Button](#)



18 WALL-MOUNTED SHOWER

A shower is an optional feature in a Changing Places toilet but is useful in some settings such as leisure centres.

If you wish to include a shower in your facility, this should be either positioned close to the changing table, or have a fold-down seat and the floor should be unobstructed. There should also be suitable floor drainage and a waterproof non-slip floor with a gradient of no more than 1:50 to the drain.

Multicare Recommends: [Wall-Mounted Shower](#)



19 WALL-MOUNTED SHOWER SEAT

If fitting a shower, a wall-mounted fold-down shower seat should be installed if the shower cannot be positioned close to the adjustable changing table.

Multicare Recommends: [Wall-Mounted Shower Seat](#)



THE COST OF INSTALLING A CHANGING PLACES TOILET

HOW MUCH Do Changing Places Cost?

The cost of a Changing Places Toilet facility can vary depending on many factors, such as if structural building work is required, equipment specification and more.

When you choose Multicare Medical as your partner, the equipment will cost anywhere from approximately £6,000 to £14,000, and we can work to your specific budget to design and **create the best space possible**.

Disabled people in the
UK have a combined
spending power of

£274 billion

wearepurple.co.uk

It's estimated that there are

14 million

disabled people in the UK

2019 - wearepurple.co.uk

Whilst it may seem like a big investment, when you look at the increase in footfall as a result, the business case and return on investment is clear.

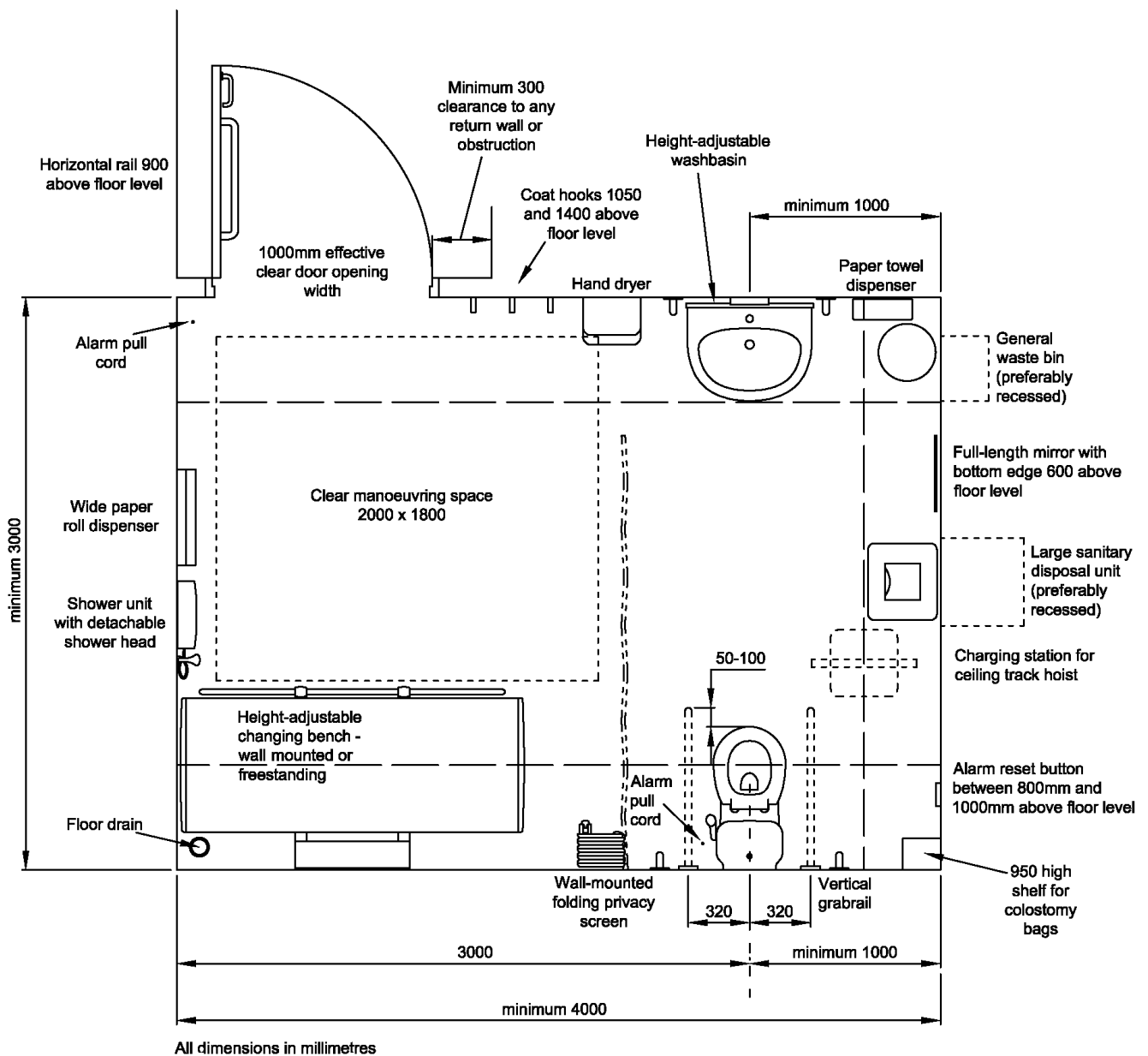
It's also important to note that not only is this an investment, welcoming disabled people and their families to your venue is simply **the right thing to do!**



Visit: multicaremedical.co.uk/changing-places

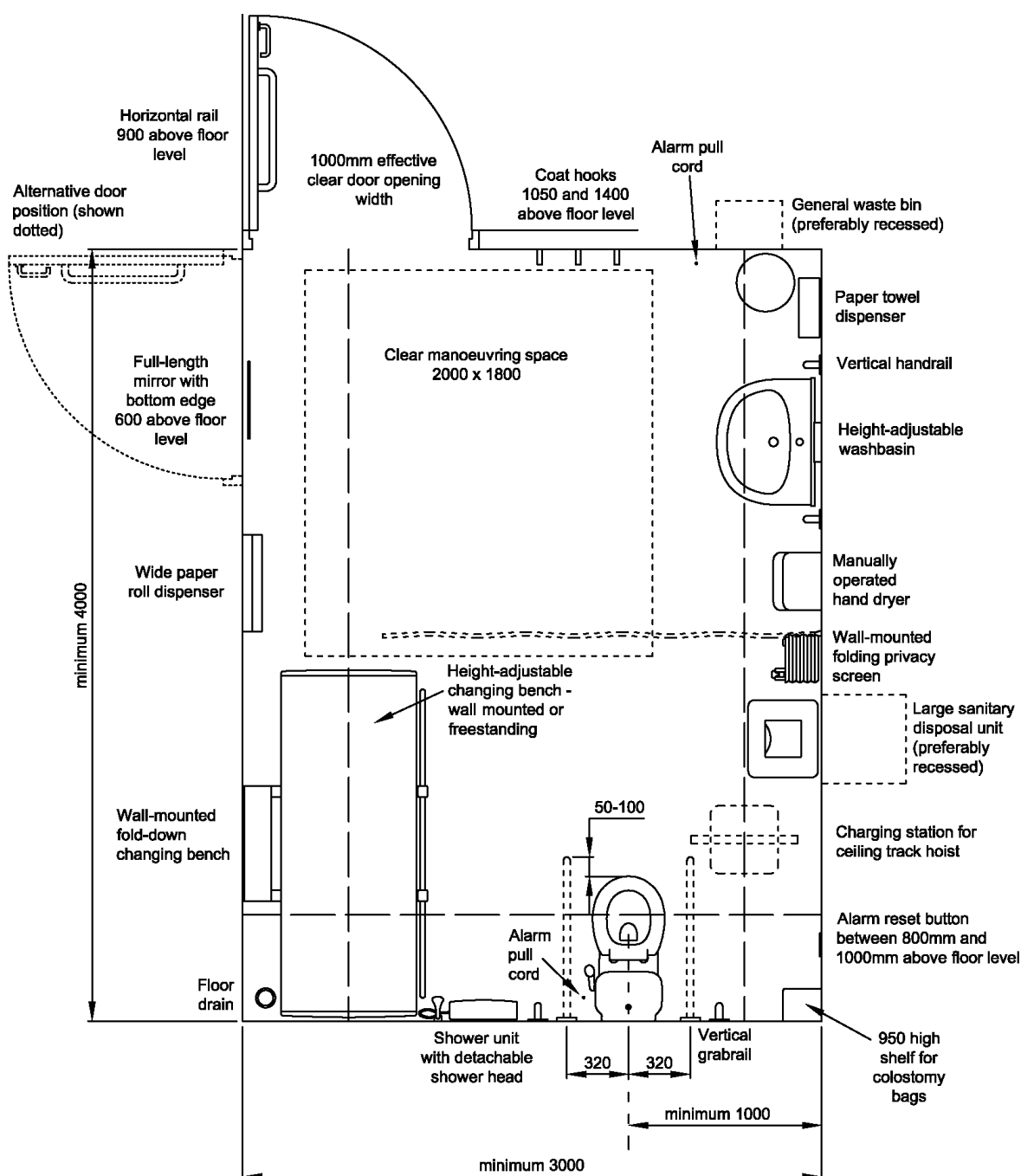
EXAMPLE ROOM LAYOUTS

LAYOUT Example 1



Corner door position
 Layout as per BS 8300-2:2018
 Shower and floor drain positioned away from the door
 Suitable for free-standing or wall mounted changing table
 Full room ceiling track coverage

LAYOUT Example 2



STEP-BY-STEP GUIDE TO INSTALLING YOUR NEW FACILITY

CONSULTATION Stage

Book an appointment online through multicaremedical.co.uk/changing-places for an experienced assessor to discuss your plans and objectives for your new Changing Places toilet facility.

A no obligation objective analysis of your scheme will be issued, containing recommendations and suggestions on the most appropriate approach to achieve your goals.

One of the Changing Places experts will advise on room layout and design as well as assist with the equipment specification that best suits your needs, and the needs of your users.

SPACE Planning & Design

Multicare offer a free space planning and design service and we can provide you with detailed schematic and working drawings both in 2D and 3D to give you a clear idea of how your Changing Places space will look and work.

At this stage you will also be issued with a detailed quotation and specification enabling you to budget accurately for funding purposes.

INSTALLATION & Fitting

Once the design has been agreed, Multicare can take care of the complete installation programme from start to finish for complete peace of mind.

The team can either liaise with your chosen contractor, or act as project managers to oversee the entire refurbishment to provide a turnkey project.

COMMISSIONING & Registration

Following the installation, Multicare will commission all the equipment according to the relevant legislation, providing you with a full operation and maintenance manual for the facility.

By choosing Multicare to manage your project, you will have your facility fully registered with the Changing Places Consortium so it is included in the official Changing Places Toilet Map and website helping users to plan trips and days out away from home with ease.

Registration will give your venue greater visibility and increase footfall. This is something the Multicare team can assist with to ensure full registration.

MAINTENANCE & Servicing

Once your Changing Places facility is in use, it's important that you keep the room and equipment safe and in good working order to avoid any unwanted surprises from users.

The ceiling hoist will require a service every 6 months under the LOLER regulations. All other specialist equipment will need an annual service. Multicare provide a range of options, including 3 and 5-year service and maintenance packages, including the warranty, so you never need to worry about your equipment.

You should also carry out simple weekly visual checks to ensure that the equipment is in good working order, and carry out full cleaning in line with other existing washroom and toilet facilities.



Changing Places at Cambridge University

OTHER CONSIDERATIONS

DOORS

The position of the door in your Changing Places room should be carefully considered and positioned to provide easy access in and out of the room. It should be clearly visible, easy to operate, and open outwards to maximise floor space within the facility.

The entrance should be 1,000mm wide with a level threshold. If there is any change in floor finish, a low-profile threshold plate should be fixed to cover any gaps.

The door should feature an easy action handle at 900mm height and/or a vertical pull-down handle. A horizontal support rail should also be fitted on the inside of the door.

Automatic doors should be considered as an alternative where possible.

LOCKS & Security

Ensuring your Changing Places facility is safe and secure is extremely important and the door should have a privacy lock to prevent unauthorised access and safeguard the room when not in use.

There are many factors that will determine if the room should be locked when not in use including location of the facility, proximity of support staff/management, and the safeguarding policies at the venue.

However, the following rules should apply to privacy locks on your Changing Places toilet:

- The lock should be easy to operate and include a red/white occupied/vacant indicator
- The lock should incorporate a mechanism to allow the door to be opened from the outside in the event of an emergency

LIGHTING & Décor

The equipment and the room should have a clear visual contrast and the facility should be a warm and welcoming environment. Artificial lighting should be provided to achieve an even level of illumination and more than one light may be required to achieve this.

Light fittings which are timer controlled should be avoided as this could compromise safety of the user if the assistant needs to reactivate the light.

Ultraviolet light should not be used as this can reduce the visual contrast of the room surfaces and can also induce seizures.

Matt surfaces should be used to avoid glare and pale tones should be used for ceilings and walls.

The colour of the fixtures and fittings such as grab rails, dispensers, pull cords, switches, and coat hooks etc should all also contrast with the room to be easily identified.

Light fittings should be shallow or recessed into the ceiling to avoid obstruction with the ceiling hoist and the switch should be a pull cord type located above floor level, to between 900-1,000mm. This should not be red as it could be mistaken with the emergency pull cord.

HEATING & Ventilation

Your Changing Place toilet should be adequately heated to a comfortable temperature. Users may be showered, changed, and undressed for an extended period of time so the temperature should take this into account.

Underfloor heating is recommended and should be specified on new-build projects or rooms that are being substantially renovated.

Any radiators should be carefully positioned so they don't obstruct any of the equipment, and they should have a maximum temperature of 43°C with any piping concealed or guarded.

Convection and fan-type heaters should be avoided as they can cause draughts and discomfort due to the background noise.

WATER Supply

Hot water in pipes supplying washbasins and showers must be at least 60°C to avoid the risk of legionella. However, thermostatic taps and valves should be used to ensure that the water temperature at the point of supply does not exceed 43°C.

All water supply pipes should be concealed or boxed in to avoid any risk of injury.

TAPS

The wash basin should have taps fitted that are easy to operate and adjust with controlled water temperature to avoid injury.

Single lever centrally positioned mixer taps are ideal, and infrared touch-free taps may be beneficial to some users. Multicare can help with selecting the best taps at the planning stage.

If manual hot and cold taps are being fitted, these should be lever taps which require no more than a quarter turn to operate.

HOIST Slings

Slings are used with the ceiling track hoist to enable the user to be transferred safely between equipment within the room.

These are not expected to be provided as each user will have been assessed and use a sling suitable for their own specific requirements.

It's common for individuals to carry their slings with them as they travel away from home.



SIGNAGE & Wayfinding

Changing Places toilets are clearly identified by using the official logo.

This symbol should be used on directional signage as well as on the door to the toilet.

It's important to create a clear route with signage at regular intervals from the entrance of the venue to the Changing Places facility and be positioned so it is always visible.



TOILET Tissue

Toilet tissue should be positioned within reach of the person using the WC as well as by an assistant.

A wall-mounted dispenser could be provided as well for the convenience of an assistant.



Changing Places at Coventry Train Station

WORKING WITH MULTICARE

Multicare Medical have been helping clients install Changing Places facilities for over 10 years and work closely with architects, specifiers, and venues every step of the way.

It's our job to ensure that your Changing Places fully meets your needs and is delivered on time and on budget.

We are proud to have worked with a number of high-profile venues to increase their accessibility through the inclusion of Changing Places toilets including,



75%

of disabled people and their families have walked away from a venue because of poor accessibility

wearepurple.co.uk



CASE STUDY

ROYAL FESTIVAL HALL London

The Southbank Centre approached Multicare when considering installing a new Changing Places facility. Unloved male and female toilets were in need of some refurbishment, and being on the lower ground floor they were ideally placed to provide level access for disabled users.

Following a site visit, Multicare drew up a detailed schedule of work with timeframe, material and equipment specification. This included the demolition of a separating wall, and a complete refurbishment of the new enlarged space to provide a compliant Changing Places facility.

It was important that work would not interfere with the programme of events so to facilitate this, some of the work was scheduled for the evening.

WORK INCLUDED

Demolition & Enabling Work

Hot and cold water, electrics and emergency call system

Complete Refurbishment

Installation of new ceiling, wall covering and flooring

Equipment Installation

Changing Places suite of equipment

THE CHALLENGES

Due to the nature of the building, work had to be scheduled around performances to ensure minimum disruption

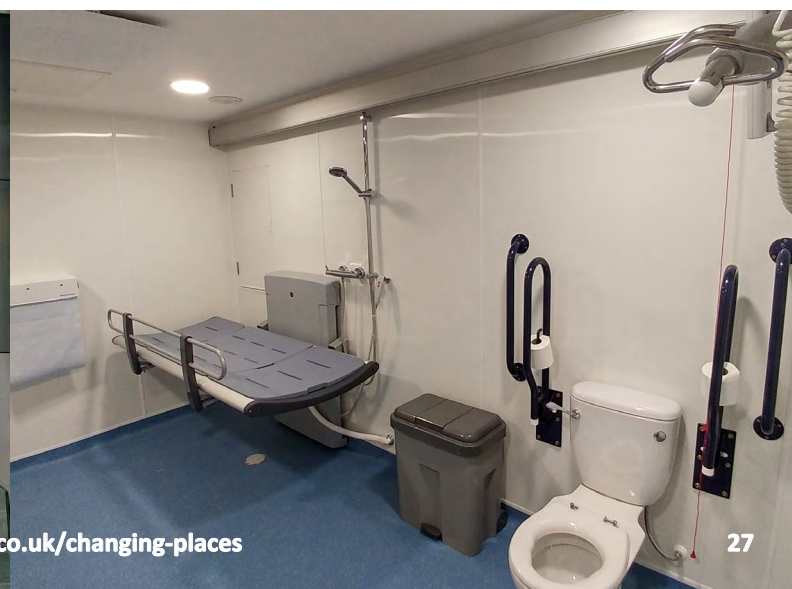
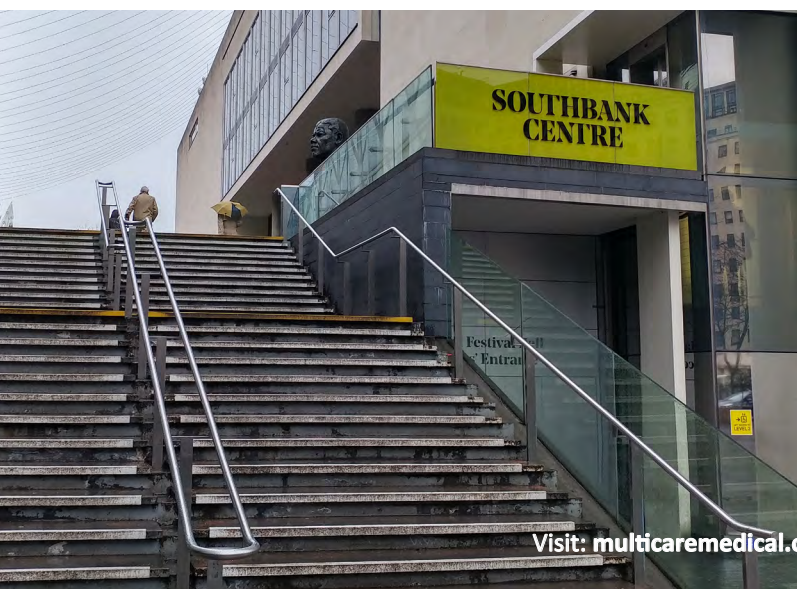
As a grade one listed building, there were strict rules around building so Multicare had to work within these guidelines

The central London location meant that logistics had to be carefully coordinated with other deliveries and work

SUMMARY

The project was completed on time and on budget within six weeks, despite some significant challenges.

The Southbank Centre is now a proud owner of a compliant Changing Places facility which has proved a great success for their clientele.



CHECK LIST & BUDGET

PLANNING Stage

Estimated
Cost

Appropriate venue/location identified	<input type="checkbox"/>	£
Space is at least 3m x 4m (12 sq m)	<input type="checkbox"/>	£
Consult relevant stakeholders	<input type="checkbox"/>	£
Consult architect and access consultant	<input type="checkbox"/>	£
Obtain relevant statutory consents	<input type="checkbox"/>	£
Room design is in context and is developed with the stakeholders	<input type="checkbox"/>	£
Routes to the facility are fully accessible	<input type="checkbox"/>	£
Clear signage indicates the location of the facility	<input type="checkbox"/>	£
Information about access and guidance for use included	<input type="checkbox"/>	£
Additional information included to explain the purpose of the facility	<input type="checkbox"/>	£
Changing Places informed of the new facility for registration	<input type="checkbox"/>	£

ROOM Layout

Estimated
Cost

Direct access from the door into the space	<input type="checkbox"/>	£
Equipment positioned to maximise manoeuvring space	<input type="checkbox"/>	£
Easy and direct transfer using the hoist between equipment	<input type="checkbox"/>	£
Sufficient room for an assistant either side of the WC	<input type="checkbox"/>	£
Shower positioned close to the changing table	<input type="checkbox"/>	£
Floor drain is positioned to prevent water build up in the room	<input type="checkbox"/>	£
Privacy screen or curtain	<input type="checkbox"/>	£
Reference made to the Changing Places layout and guidance	<input type="checkbox"/>	£

EQUIPMENT & Environment

Estimated
Cost

User Information	<input type="checkbox"/>	£
Facility location and access information provided	<input type="checkbox"/>	£
Safe working load of the hoist and changing bench stated	<input type="checkbox"/>	£
Compatibility of hoist with sling types noted	<input type="checkbox"/>	£
Confirm that slings are not provided	<input type="checkbox"/>	£
The availability of shower facilities	<input type="checkbox"/>	£
Information above included on your venue website and any publicity information	<input type="checkbox"/>	£

DOOREstimated
Cost

Visually contrasting frame, handle and lock	<input type="checkbox"/>	£
Clear Changing Places sign included	<input type="checkbox"/>	£
If locked, access instructions provided	<input type="checkbox"/>	£
Minimum of 1,000mm effective clear width	<input type="checkbox"/>	£
Outward opening if possible	<input type="checkbox"/>	£
Horizontal pull bar at 900mm height on the inside	<input type="checkbox"/>	£
Easy-to-use privacy lock	<input type="checkbox"/>	£
Coat hooks on the inside at 1050mm and 1,400mm	<input type="checkbox"/>	£

WCEstimated
Cost

Peninsular position with space both sides and a minimum of 1,000mm from the wall	<input type="checkbox"/>	£
Seat height 480mm from the floor	<input type="checkbox"/>	£
Comfortable back rest included	<input type="checkbox"/>	£
Toilet paper within reach	<input type="checkbox"/>	£
Retractable wall-mounted or mobile privacy screen	<input type="checkbox"/>	£
Colostomy bag shelf fixed within reach of the WC and 950mm from the floor	<input type="checkbox"/>	£

GRAB RAILS / Drop Down Support RailsEstimated
Cost

Contrast visually with the wall	<input type="checkbox"/>	
Drop down support rails 320mm either side of the WC	<input type="checkbox"/>	
Drop down support rails 680mm above the floor when in the down position	<input type="checkbox"/>	
Easy to grip, minimum 600mm long, 32-35mm diameter rails	<input type="checkbox"/>	

WASH BasinEstimated
Cost

Height adjustable (580 – 1,030mm range) with safety stop	<input type="checkbox"/>	£
Or		
Standard fixed wash basin positioned at 720 – 740mm from the floor	<input type="checkbox"/>	£
Clear knee space underneath (700mm from the floor)	<input type="checkbox"/>	£
Large bowl and taps within reach	<input type="checkbox"/>	£
Level surface either side of the bowl for arm rests	<input type="checkbox"/>	£
Lever mixer tap	<input type="checkbox"/>	£
Soap dispenser above, easy to use and within reach	<input type="checkbox"/>	£

HAND DryingEstimated
Cost

Automatic hand dryer near basin	<input type="checkbox"/>	£
Paper towels supplied in addition to hand dryer	<input type="checkbox"/>	£
Facilities contrast against the wall with no reflective surface (800 – 1,000mm from the floor)	<input type="checkbox"/>	£

CEILING Track HoistEstimated
Cost

Full room coverage (H-Frame / XY System)	<input type="checkbox"/>	£
Safe working load – minimum 200kg	<input type="checkbox"/>	£
Minimum ceiling height 2.4m	<input type="checkbox"/>	£
Ceiling lights and alarms recessed	<input type="checkbox"/>	£
Sling compatibility information provided	<input type="checkbox"/>	£
Instructions and safe working load clearly visible and easy to understand	<input type="checkbox"/>	£
Emergency lower / stop feature	<input type="checkbox"/>	£
Return to charge feature and charging instructions included	<input type="checkbox"/>	£

CHANGING BenchEstimated
Cost

Freestanding or wall mounted	<input type="checkbox"/>	£
Safe working load – minimum 200kg	<input type="checkbox"/>	£
Minimum 1,800 long x 800mm wide	<input type="checkbox"/>	£
Adjustable in height from 300 – 1,000mm from the floor	<input type="checkbox"/>	£
Instructions and safe working load clearly visible and easy to understand	<input type="checkbox"/>	£
Comfortable surface for changing and/or showering	<input type="checkbox"/>	£
Wide paper roll dispenser provided by the bench at 800 – 1,000mm from the floor	<input type="checkbox"/>	£

PRIVACY ScreenEstimated
Cost

Free standing or wall mounted screen/curtain	<input type="checkbox"/>	£
Folds away without obstructing any other equipment	<input type="checkbox"/>	£

SHOWEREstimated
Cost

Non-slip flooring	<input type="checkbox"/>	£
Step-free access with a minimum slope 1:50 for drainage	<input type="checkbox"/>	£
Shower unit with detachable head located next to the changing bench	<input type="checkbox"/>	£

SHOWER Seat (if provided)Estimated
Cost

Seat with backrest and supporting grab rail	<input type="checkbox"/>	£
Adjustable height / 480mm from the floor with the seat edge 650mm from the wall	<input type="checkbox"/>	£
Safe working load – minimum 200kg	<input type="checkbox"/>	£

BINSEstimated
Cost

Large sanitary disposal bin	<input type="checkbox"/>	£
Recessed where possible	<input type="checkbox"/>	£
Separate general waste bin	<input type="checkbox"/>	£

ALARM SystemEstimated
Cost

Audible and with indicator light, linked to a staffed area	<input type="checkbox"/>	£
Alarm pull cords - red, with bangles at two heights (100mm & 800-1,000mm from the floor)	<input type="checkbox"/>	£
Alarm cord positioned by the WC	<input type="checkbox"/>	£
Alarm cord positioned by the door	<input type="checkbox"/>	£
Pull cords should not obstruct hoist movement or other equipment	<input type="checkbox"/>	£
Contrasting reset button located near the alarm	<input type="checkbox"/>	£

MIRROREstimated
Cost

Full-length, minimum 600 x 1,000mm	<input type="checkbox"/>	£
Lower edge should be no higher than 600mm from the floor	<input type="checkbox"/>	£

ENVIRONMENT

Comfortable and welcoming	<input type="checkbox"/>	
Visually contrasting fittings	<input type="checkbox"/>	
Clear instructions and signage included	<input type="checkbox"/>	
Appropriate heating	<input type="checkbox"/>	
Even lighting	<input type="checkbox"/>	
Water temperatures meet safety standards	<input type="checkbox"/>	
Good ventilation	<input type="checkbox"/>	
Non-slip flooring	<input type="checkbox"/>	

MANAGEMENT Check List

Staff trained and aware of the facility	<input type="checkbox"/>
Emergency egress, alarm and power cut policy in place	<input type="checkbox"/>
Pre-visit information included on website and literature	<input type="checkbox"/>
Access routes clean and free from obstruction	<input type="checkbox"/>
Signage on routes and facility is clearly visible	<input type="checkbox"/>
Door handles and locks all fully operable	<input type="checkbox"/>
Changing table in the correct position	<input type="checkbox"/>
Waste bin checked and not obstructing and equipment or space	<input type="checkbox"/>
Hoist motor and changing table returned to charging position and battery charged	<input type="checkbox"/>
Toilet paper stocked	<input type="checkbox"/>
Soap dispenser full	<input type="checkbox"/>
Hand towers stocked	<input type="checkbox"/>
Paper roll stocked	<input type="checkbox"/>
Sanitary dispenser included	<input type="checkbox"/>
All equipment cleaned using appropriate cleaning products	<input type="checkbox"/>
Water outlets are flushed regularly in line with risk assessment	<input type="checkbox"/>
Alarm cord at full length and not tied up on equipment	<input type="checkbox"/>
Alarms tested to ensure audio visual signals and response received	<input type="checkbox"/>
Regular equipment tests, inspection, and servicing records kept	<input type="checkbox"/>
Lights and temperature working	<input type="checkbox"/>



WHAT NEXT?

You should now have all the information you need at your fingertips to understand the Changing Places requirements so you can start your journey with Multicare.

Much more detailed information can be given by our Changing Places specialists and upon a survey of the venue so individual advice can be given.

The next step is to book a consultation with Multicare Medical which can either be carried out on-site, or virtually.



0800 298 6000

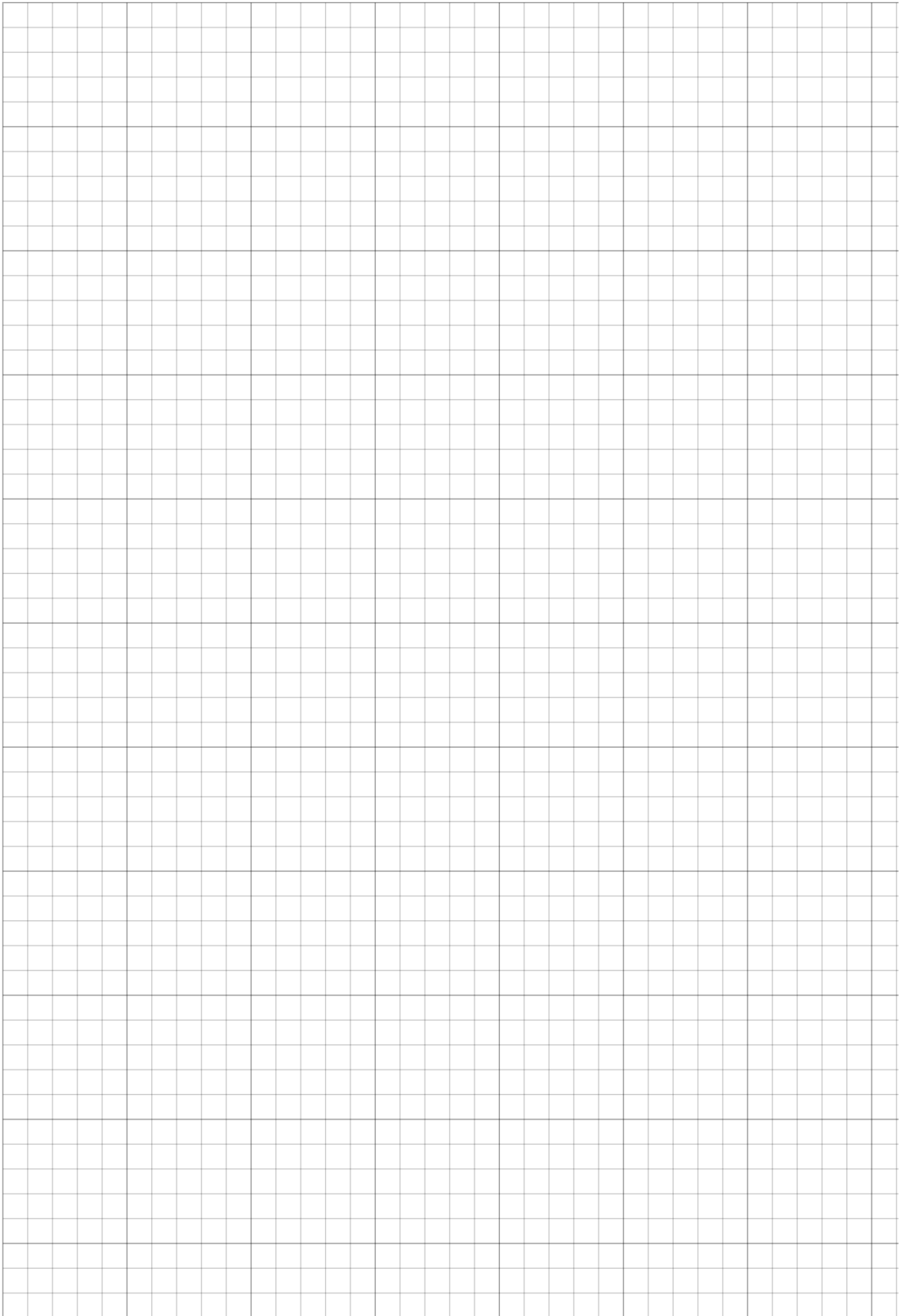


sales@multicaremedical.co.uk



www.multicaremedical.co.uk/changing-places





USEFUL LINKS & RESOURCES

If you're still looking for more information to help with your Changing Places project, below are some useful links and resources.

Changing Places

www.changing-places.org

The official Changing Places campaign website for everything you need to know about campaigning, regulations, official updates and much more.

Changing Places Toilet Map

<https://changingplaces.uktoiletmap.org/>

Map of all registered UK Changing Places toilets with useful information for planning days out.

PAMIS

www.pamis.org.uk

PAMIS (Promoting a More Inclusive Society), is a charitable organisation and member of the Changing Places Consortium. PAMIS provide support for people with profound and multiple learning disabilities, their families, carers and professionals.

GOV.UK

www.gov.uk/government/publications/changing-places-toilets-programme-prospectus

The UK Government prospectus for the £30 million Changing Places toilets programme.

BSI Shop

www.shop.bsigroup.com/products/design-of-an-accessible-and-inclusive-built-environment-buildings-code-of-practice/standard

British Standard BS 8300-2:2018 official code of practice - Design of an accessible and inclusive built environment.

Purple

www.wearepurple.org.uk

Organisation giving information and support to bring disabled people and businesses together to reduce levels of inequality.



[/ChangingPlacesUK](https://www.facebook.com/ChangingPlacesUK)



[@ChangingPlaceUK](https://twitter.com/ChangingPlaceUK)
[@MulticareLtd](https://twitter.com/MulticareLtd)



[/Multicare-UK](https://www.linkedin.com/company/Multicare-UK)



Multicare Medical Ltd
Progress House
Jacknell Road
Hinckley
LE10 3BS

0800 298 6000
www.multicaremedical.co.uk
sales@multicaremedical.co.uk



V3 - 06/23